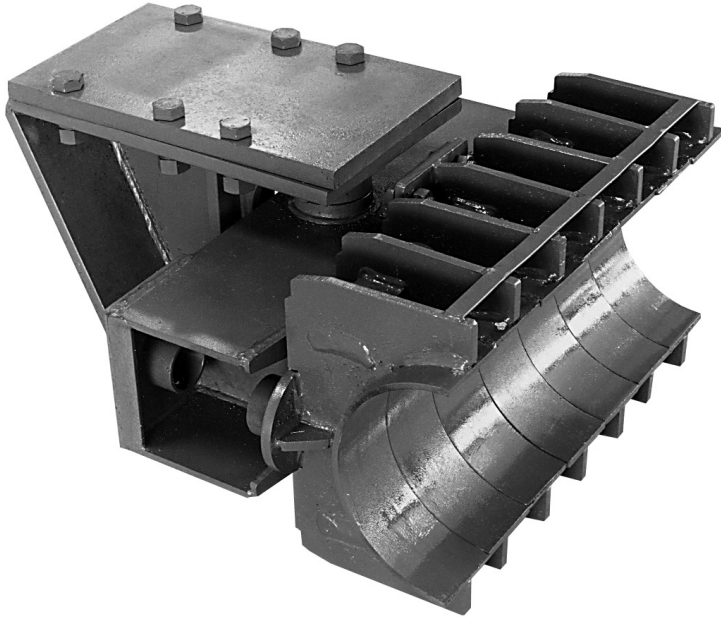


# BENDING SHOES



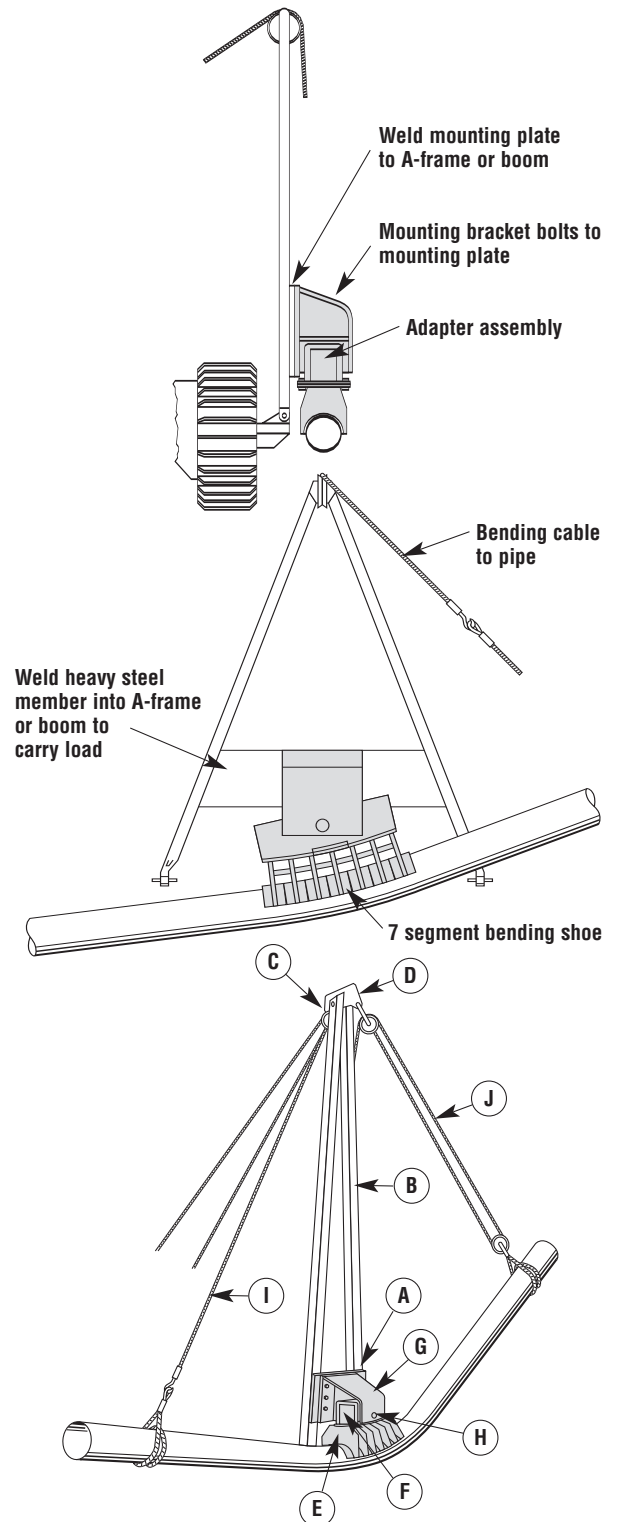
## Installation Details

1. Mounting plate A is welded to boom B.
2. Dead eyes C and D are welded to top of boom B.
3. Mounting bracket G is bolted to adapter plate A.
4. Bending shoe E and adapter assembly F is pinned to mounting bracket G, using pin H.
5. Static line I is attached to top of boom at C.

## Operating Instructions

Static line I is attached to one end of pipe about 10 feet from bending shoe. Sideboom load line J is attached to other end of pipe (for maximum bending force, load line should be attached about 10 feet from bending shoe). Pulling on load line draws pipe into bending shoe E.

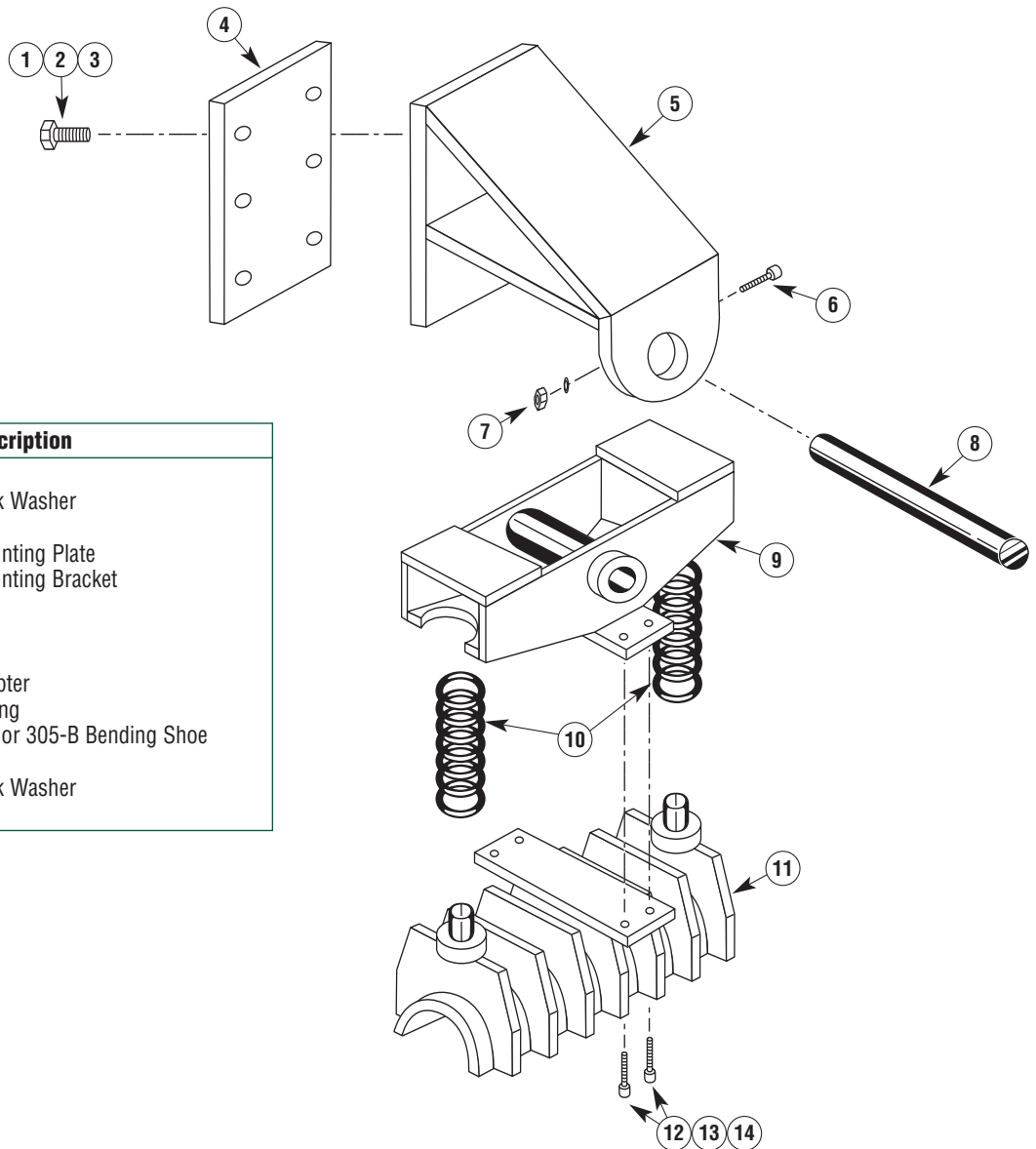
Continued pull on load line bends pipe in shoe.



**Sawyer products are sold exclusively through distributors in the U.S. and abroad.  
Please contact us for the name of your nearest distributor.**

# BENDING SHOES

## Mounting Bracket and Adapter Assembly for Model 305 (unpadded) and 305-B (padded) Tractor Pipe Bending Shoe



No.	Amount	Description
1	6	Bolt
2	6	Lock Washer
3	6	Nut
4	1	Mounting Plate
5	1	Mounting Bracket
6	1	Bolt
7	1	Nut
8	1	Pin
9	1	Adapter
10	2	Spring
11	As Nec.	305 or 305-B Bending Shoe
12	4	Bolt
13	4	Lock Washer
14	4	Nut



**SAWYER MFG. COMPANY**

1031 N. Columbia Place • Tulsa, Oklahoma 74110 U.S.A.

Phone: (918) 834-2550 • Fax: (918) 834-0318

E-Mail: [info@sawyerfmfg.com](mailto:info@sawyerfmfg.com)

Web Site: [www.sawyerfmfg.com](http://www.sawyerfmfg.com)

**SETTING THE STANDARD FOR PIPELINE AND WELDING EQUIPMENT SINCE 1948**

©2007 Sawyer Manufacturing Company, Rev. 8/07, Printed in U.S.A.