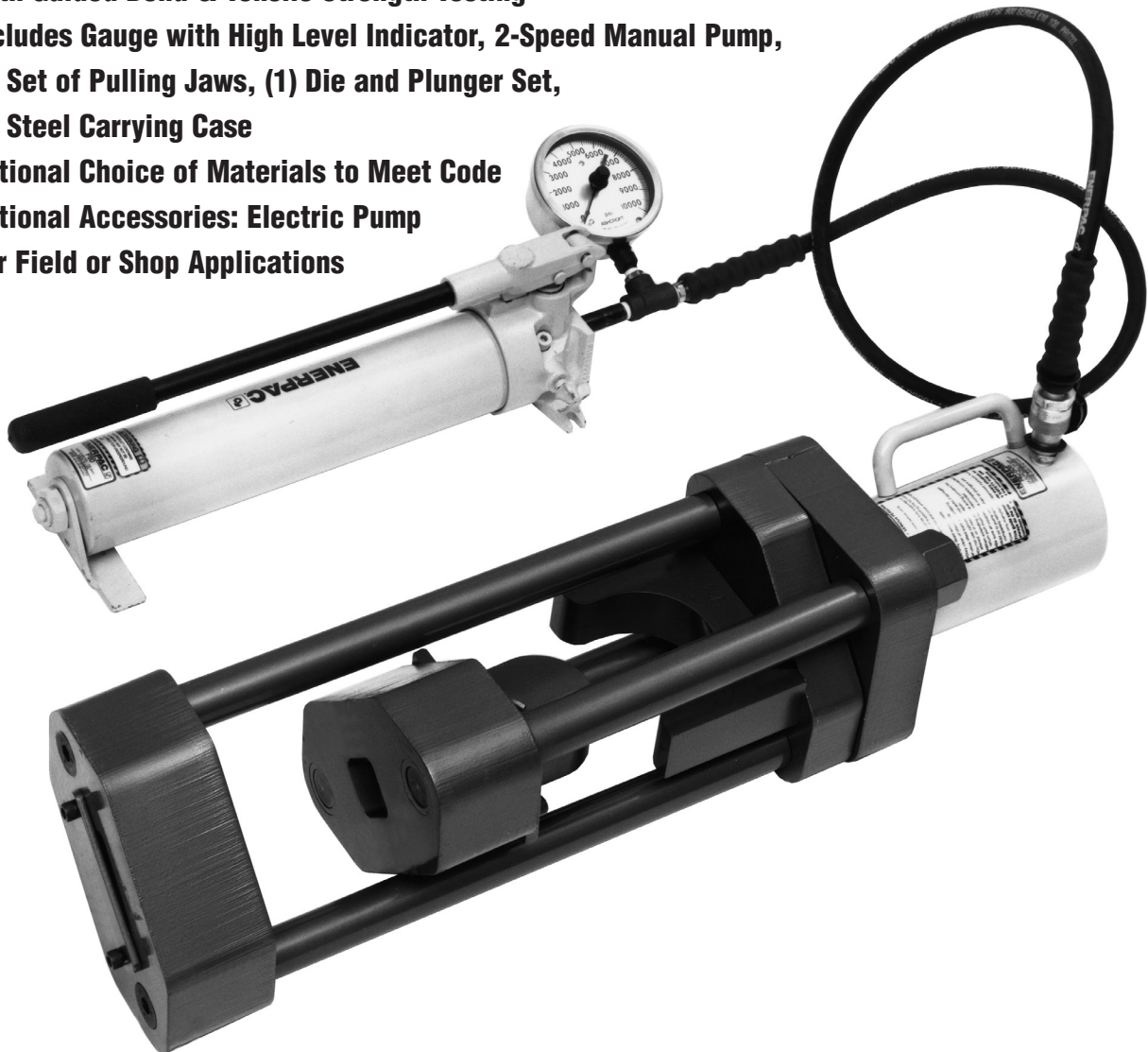


# HYDRAULIC GUIDED BEND AND TENSILE TESTING MACHINES

## Model 273-50, 50-Ton Guided Bend and Tensile Tester

### FOR FIELD AND SHOP APPLICATIONS

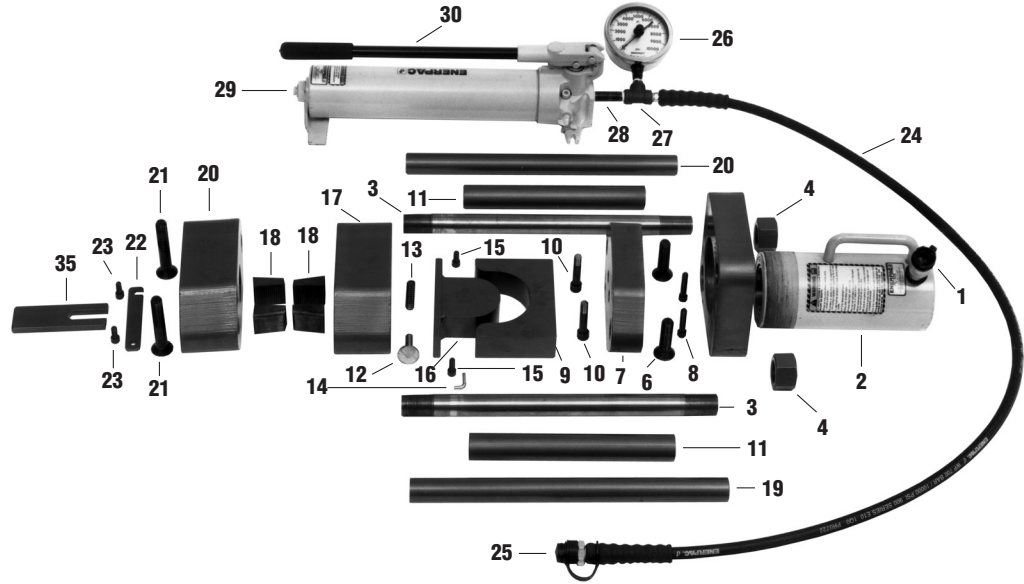
- Both Guided Bend & Tensile Strength Testing
- Includes Gauge with High Level Indicator, 2-Speed Manual Pump, (1) Set of Pulling Jaws, (1) Die and Plunger Set, (1) Steel Carrying Case
- Optional Choice of Materials to Meet Code
- Optional Accessories: Electric Pump
- For Field or Shop Applications



*Sawyer products are sold exclusively through distributors in the U.S. and abroad.  
Please contact us for the name of your nearest distributor.*

# MODEL 273-50, 50-TON GUIDED BEND AND TENSILE TESTER

## Parts List Model 273-50



## Parts List

| No. | Amount | Dwg./Part No. | Description/Name             | No. | Amount | Dwg./Part No. | Description/Name                    |
|-----|--------|---------------|------------------------------|-----|--------|---------------|-------------------------------------|
| 1.  | 1      | 526-8-F       | 1/2 Hydraulic Coupling-F     | 19. | 2      | B29C0-C       | Compression Shaft                   |
| 2.  | 1      | 526-3         | Hydraulic Cylinder           | 20. | 1      | B25A0-A       | Traveling Head                      |
| 3.  | 2      | B29C0-A       | Tension Shaft                | 21. | 2      | 519-67        | Bolt                                |
| 4.  | 2      | 517-28        | Nut                          | 22. | 1      | B25A0-B       | Jaw Retainer                        |
| 5.  | 1      | B12BH         | Base                         | 23. | 2      | 519-37        | Bolt                                |
| 6.  | 2      | 519-66        | Bolt                         | 24. | 1      | 527-1         | Hydraulic Hose Assembly             |
| 7.  | 1      | B12BI         | Sub Base                     | 25. | 1      | 526-8-M       | 1/2 Hydraulic Coupling-M            |
| 8.  | 2      | 519-68        | Bolt                         | 26. | 1      | 526-12        | Gauge                               |
| 9.  | 2      | B116*         | Die                          | 27. | 1      | 526-9         | Pipe "T"                            |
| 10. | 2      | 519-36        | Bolt                         | 28. | 1      | 526-11        | Pipe Nipple                         |
| 11. | 2      | B29C0-B       | Spacer                       | 29. | 1      | 526-5         | Hydraulic Pump                      |
| 12. | 1      | A110B-A       | Plunger                      | 30. | -      | -             | -                                   |
| 13. | 1      | A110B-B       | Spring                       | 31. | 1      | B13R-C        | Metal Case                          |
| 14. | 1      | A110B-C       | "L" Bolt                     | 32. | 1      | 526-6         | Electric Pump (optional-not shown)  |
| 15. | 1      | 519-34        | Bolt                         | 33. | 1      | 526-7         | Pneumatic Pump (optional-not shown) |
| 16. | 4      | B116*         | Plunger (determined by code) | 34. | 1      | A3S-A         | Conversion Chart (not shown)        |
| 17. | 2      | B25AN         | Stationary Head              | 35. | 1      | A119-V        | Jaw Tensioner                       |
| 18. | 4      | A115A*        | Jaw                          |     |        |               |                                     |

\*Determined by sample thickness and code requirements

### Other Sawyer Manufacturing Products:

Beveling Machines • External Line-Up Clamps • Internal Line-Up Clamps • Hydraulic Dent Removers  
Tractor-Mounted Bending Shoes • Accuwrap Manual Pipe Wrapping Machine • Manual Pipe Expanders • Pipe Hooks and Inserts  
Aluminum Hand Clamps • Coupon Cutters



## SAWYER MFG. COMPANY

1031 N. Columbia Place • Tulsa, Oklahoma 74110 U.S.A.

Phone: (918) 834-2550 • Fax: (918) 834-0318

E-Mail: [info@sawyeremfg.com](mailto:info@sawyeremfg.com)

Web Site: [www.sawyeremfg.com](http://www.sawyeremfg.com)

**SETTING THE STANDARD FOR PIPELINE AND WELDING EQUIPMENT SINCE 1948**

©2007 Sawyer Manufacturing Company, Rev. 8/07, Printed in U.S.A.