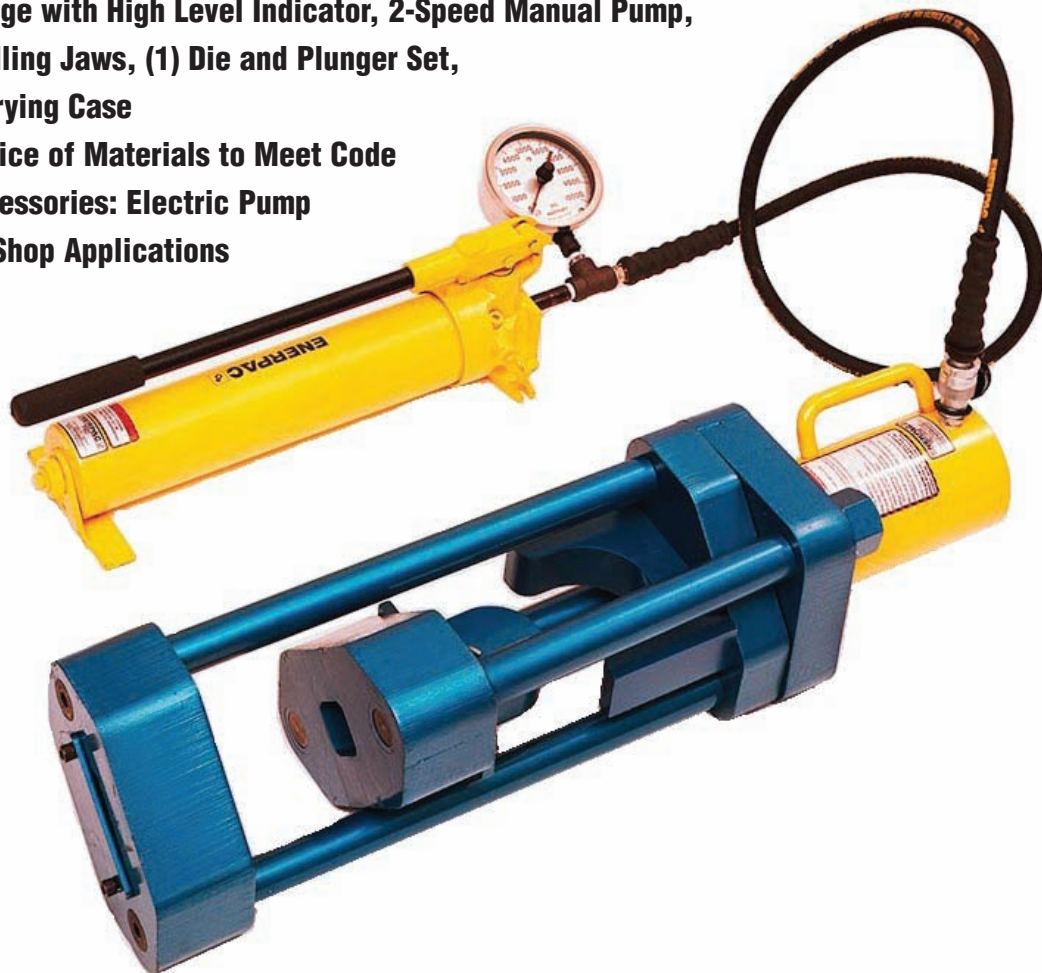


HYDRAULIC GUIDED BEND AND TENSILE TESTING MACHINES

Model 273-50, 50-Ton Guided Bend and Tensile Tester

FOR FIELD AND SHOP APPLICATIONS

- Both Guided Bend & Tensile Strength Testing
- Includes Gauge with High Level Indicator, 2-Speed Manual Pump, (1) Set of Pulling Jaws, (1) Die and Plunger Set, (1) Steel Carrying Case
- Optional Choice of Materials to Meet Code
- Optional Accessories: Electric Pump
- For Field or Shop Applications



SAWYER MFG COMPANY

1031 N. Columbia Place • Tulsa, Oklahoma 74110 U.S.A.

Phone: (918) 834-2550 • Fax: (918) 834-0318

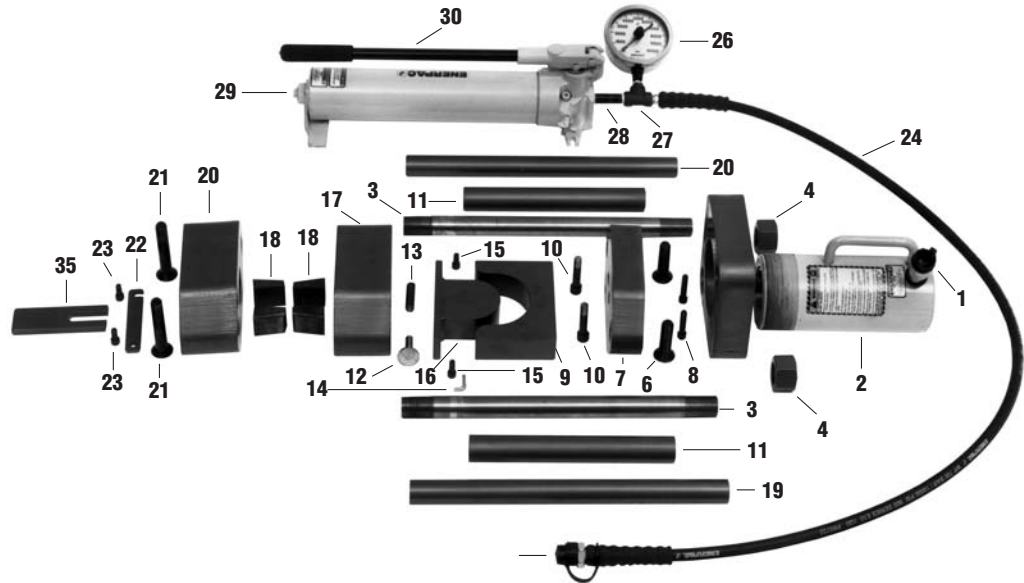
E-Mail: info@sawyermfg.com

Web Site: www.sawyermfg.com

***Sawyer products are sold exclusively through distributors in the U.S. and abroad.
Please contact us for the name of your nearest distributor.***

MODEL 273-50, 50-TON GUIDED BEND AND TENSILE TESTER

Parts List Model 273-50



Parts List

No.	Amount	Dwg./Part No.	Description/Name	No.	Amount	Dwg./Part No.	Description/Name
1.	1	526-8-F	1/2 Hydraulic Coupling-F	19.	2	B29CO-C	Compression Shaft
2.	1	526-3	Hydraulic Cylinder	20.	1	B25AO-A	Traveling Head
3.	2	B29CO-A	Tension Shaft	21.	2	519-67	Bolt
4.	2	517-28	Nut	22.	1	B25AO-B	Jaw Retainer
5.	1	B12BH	Base	23.	2	519-37	Bolt
6.	2	519-66	Bolt	24.	1	527-1	Hydraulic Hose Assembly
7.	1	B12BI	Sub Base	25.	1	526-8-M	1/2 Hydraulic Coupling-M
8.	2	519-68	Bolt	26.	1	526-12	Gauge
9.	2	B116*	Die	27.	1	526-9	Pipe "T"
10.	2	519-36	Bolt	28.	1	526-11	Pipe Nipple
11.	2	B29CO-B	Spacer	29.	1	526-5	Hydraulic Pump
12.	1	A110B-A	Plunger	30.	-	-	-
13.	1	A110B-B	Spring	31.	1	B13R-C	Metal Case
14.	1	A110B-C	"L" Bolt	32.	1	526-6	Electric Pump (optional-not shown)
15.	1	519-34	Bolt	33.	1	526-7	Pneumatic Pump (optional-not shown)
16.	4	B116*	Plunger (determined by code)	34.	1	A3S-A	Conversion Chart (not shown)
17.	2	B25AN	Stationary Head	35.	1	A119-V	Jaw Tensioner
18.	4	A115A*	Jaw				

*Determined by sample thickness and code requirements

Other Sawyer Manufacturing Products:

Beveling Machines • External Line-Up Clamps • Internal Line-Up Clamps • Hydraulic Dent Removers
Tractor-Mounted Bending Shoes • Accuwrap Manual Pipe Wrapping Machine • Manual Pipe Expanders • Pipe Hooks and Inserts
Aluminum Hand Clamps • Coupon Cutters



SAWYER MFG COMPANY

1031 N. Columbia Place • Tulsa, Oklahoma 74110 U.S.A.

Phone: (918) 834-2550 • Fax: (918) 834-0318

E-Mail: info@sawyerfmfg.com

Web Site: www.sawyerfmfg.com

**Sawyer products are sold exclusively through distributors in the U.S. and abroad.
Please contact us for the name of your nearest distributor.**