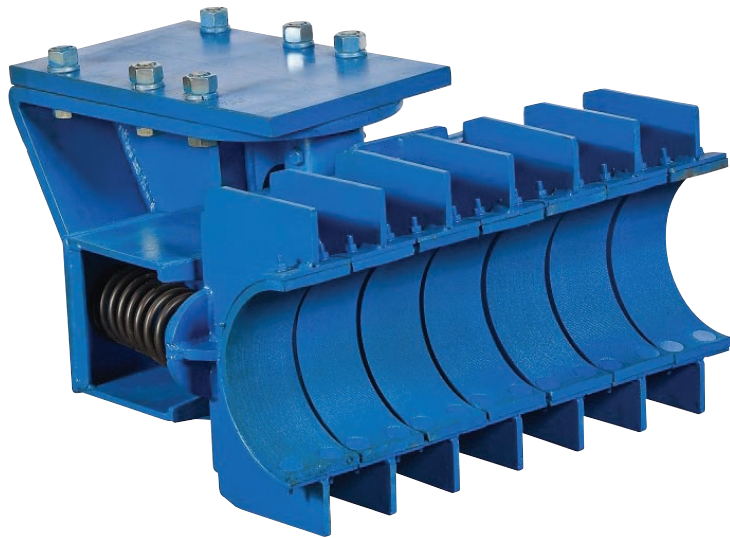


BENDING SHOES



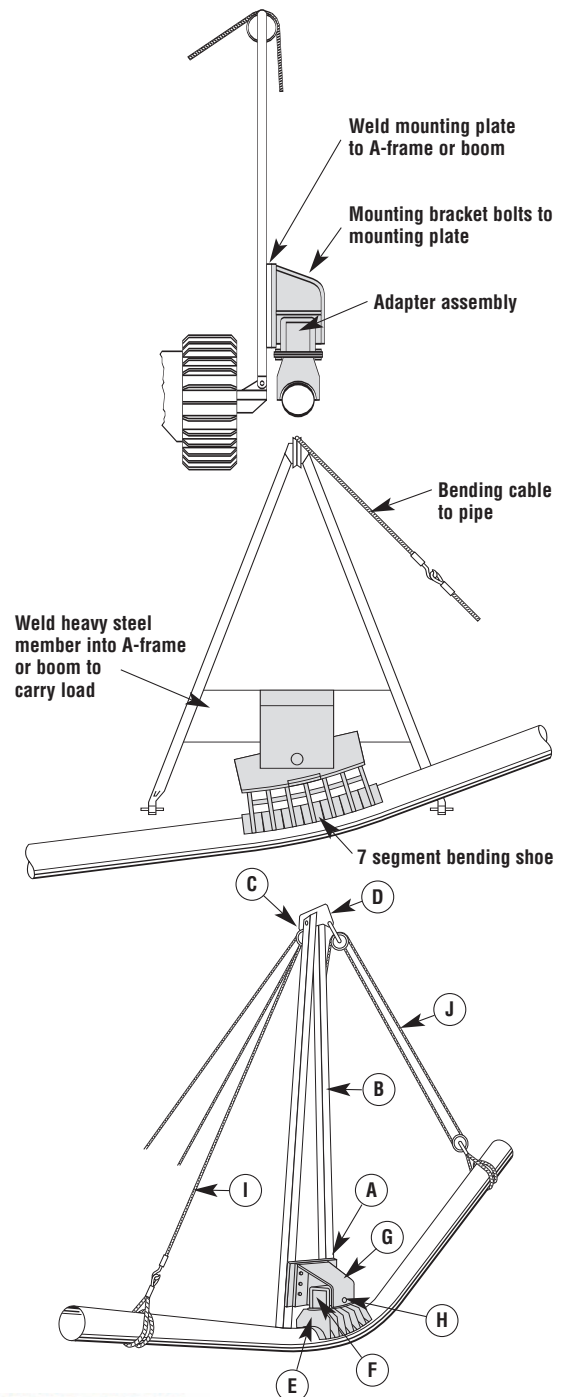
Installation Details

1. Mounting plate A is welded to boom B.
2. Dead eyes C and D are welded to top of boom B.
3. Mounting bracket G is bolted to adapter plate A.
4. Bending shoe E and adapter assembly F is pinned to mounting bracket G, using pin H.
5. Static line I is attached to top of boom at C.

Operating Instructions

Static line I is attached to one end of pipe about 10 feet from bending shoe. Sideboom load line J is attached to other end of pipe (for maximum bending force, load line should be attached about 10 feet from bending shoe). Pulling on load line draws pipe into bending shoe E.

Continued pull on load line bends pipe in shoe.



SAWYER MFG COMPANY

1031 N. Columbia Place • Tulsa, Oklahoma 74110 U.S.A.

Phone: (918) 834-2550 • Fax: (918) 834-0318

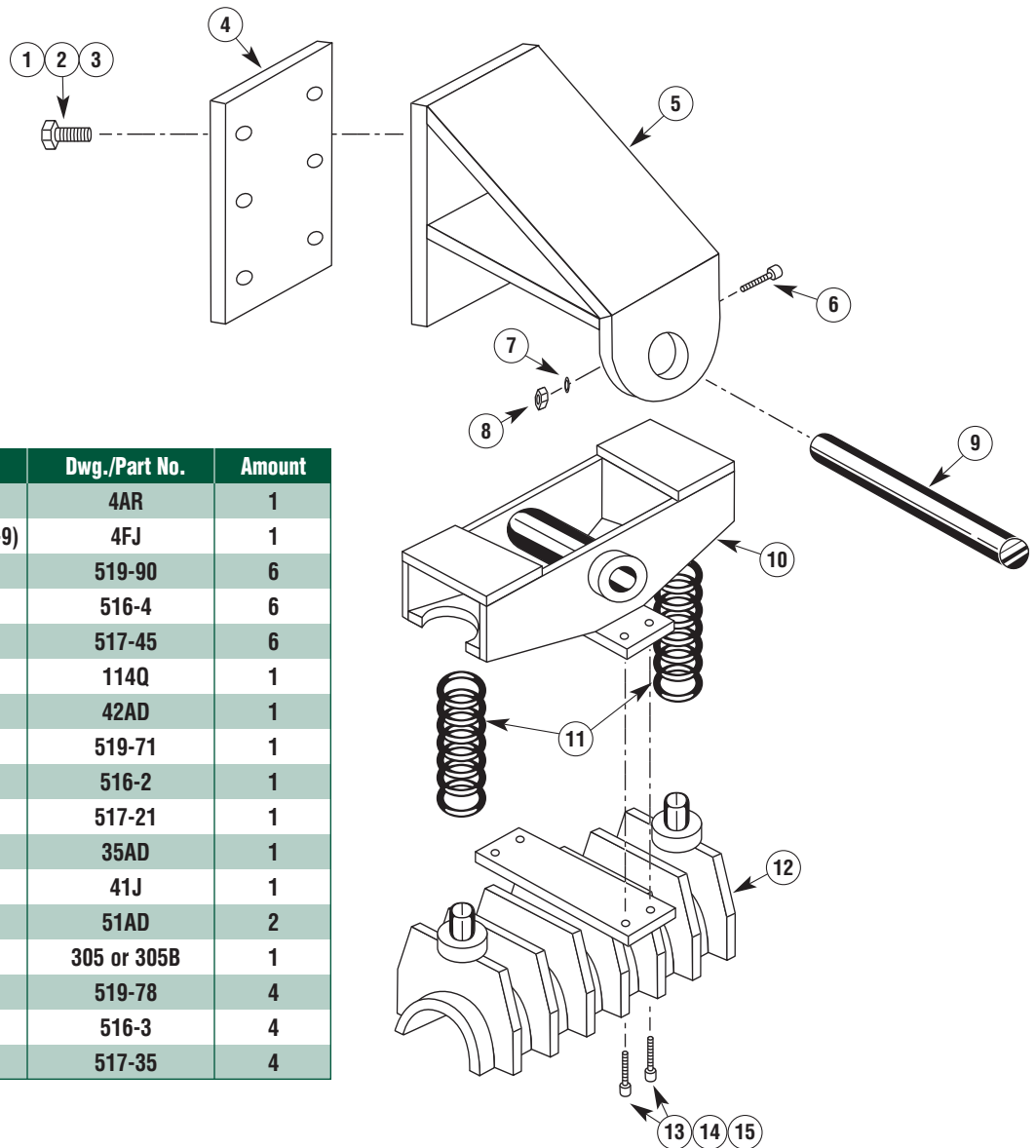
E-Mail: info@sawyerfmfg.com

Web Site: www.sawyerfmfg.com

*Sawyer products are sold exclusively through distributors in the U.S. and abroad.
Please contact us for the name of your nearest distributor.*

BENDING SHOES

Mounting Bracket and Adapter Assembly for Model 305 (unpadded) and 305-B (padded) Tractor Pipe Bending Shoe



Parts List

No.	Description/Name	Dwg./Part No.	Amount
Complete (includes 1-15, less 12)		4AR	1
Mounting Bracket Assy. (includes 1-9)		4FJ	1
1.	Bolt	519-90	6
2.	Lock Washer	516-4	6
3.	Nut	517-45	6
4.	Mounting Plate	114Q	1
5.	Mounting Bracket	42AD	1
6.	Bolt	519-71	1
7.	Lock Washer	516-2	1
8.	Nut	517-21	1
9.	Pin	35AD	1
10.	Adapter	41J	1
11.	Spring - pair	51AD	2
12.	Bending Shoe	305 or 305B	1
13.	Bolt	519-78	4
14.	Lock Washer	516-3	4
15.	Nut	517-35	4



SAWYER MFG COMPANY

1031 N. Columbia Place • Tulsa, Oklahoma 74110 U.S.A.

Phone: (918) 834-2550 • Fax: (918) 834-0318

E-Mail: info@sawyeremfg.com

Web Site: www.sawyeremfg.com

**Sawyer products are sold exclusively through distributors in the U.S. and abroad.
Please contact us for the name of your nearest distributor.**

©2011 Sawyer Manufacturing Company, Rev. 5/11, Printed in U.S.A.